



## 9676 MAYFLY RD

Ooltewah, TN 37363 | The Farms at  
Creekside

**\$569,900**

Sq Ft: 2,730 Bedrooms: 3  
Baths: 2 Half Baths: 1 Stories: 2

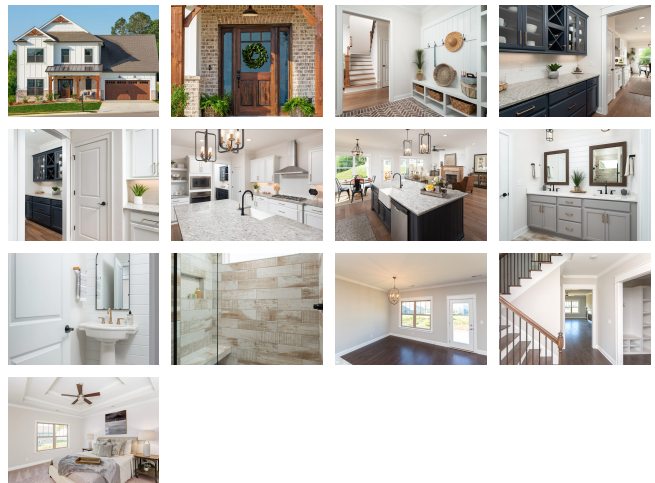
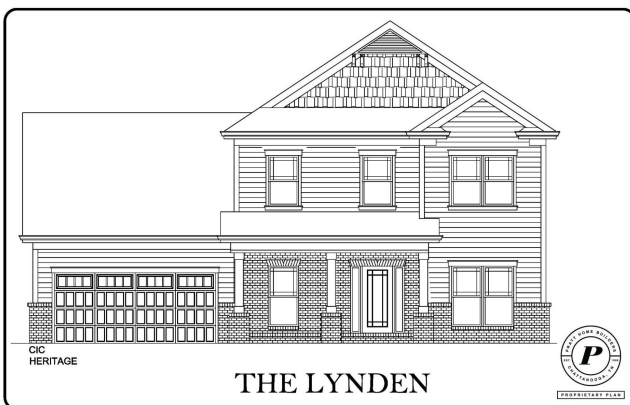
Introducing one of Ooltewah's newest neighborhoods, located in the heart of the city close to Cambridge Square, I-75 access, and Hamilton Place. Homesite 10 features The Lynden plan – dynamic layout stretching over 2,700 sqft, this plan offers an office, separate dining room, butler's pantry, walk-in pantry, and a large kitchen and breakfast room overlooking the great room. The kitchen is equipped with a large oversized island, wall-oven, gas cooktop, tile backsplash, and under cabinet lighting this is sure to make cooking a joy. Heading upstairs, you'll find the main bedroom, two additional guest bedrooms, laundry room and a spacious bonus room. Enjoy a relaxing evening on the huge covered patio located downstairs, perfect for entertaining guests. This home provides the perfect blend of practicality and style that's sure to meet all of your needs. Enjoy ample options for shopping and dining while also taking in the pastoral views of the ridge side, offering a bucolic retreat from the hustle & bustle of city life.

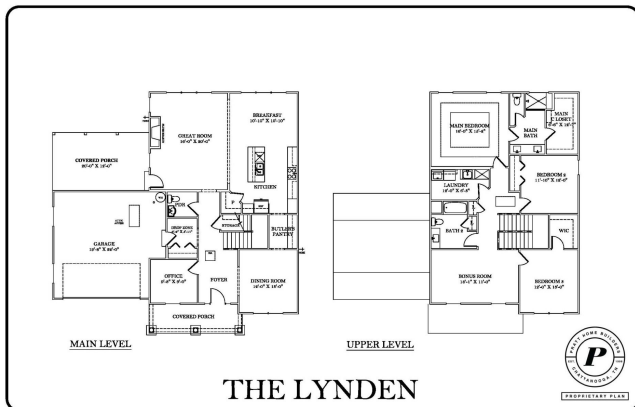
- Office
- Covered Porch
- Butlers Pantry
- Upstairs Bonus Room
- 3 Bedrooms
- 2.5 Bathrooms

### Sales Office

2514 Ooltewah Ringgold Rd  
Ooltewah, TN 37363

### Office Hours





### Home Site #10: The Lynden

9676 MAYFLY ROAD

Hardie Siding: Aged Pewter

Front Door Color:  
SW6258 Tricorn Black

Accent Brick

Front Door  
Hardware

Shake Color

*Exterior Mood Board*

### Home Site #10: The Lynden

9676 MAYFLY ROAD

Warm & Cozy LVP Flooring

Contrast Granite  
Countertops

Classic White  
Laminate Cabinets

Wall  
Colors

Classic Tile  
Backsplash

*Interior Mood Board*

