



The Silverton

Homesite 72

Quick Look

\$390,000

Beds 3

Baths 2.5

Stories 2

SqFt 1,861



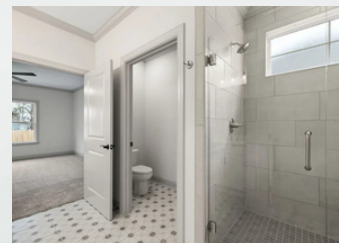
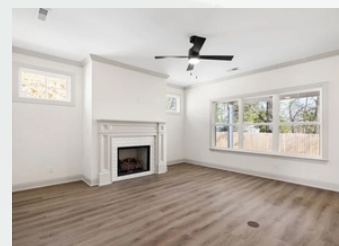
learn more
about this
home

Community

The Fields At Huntley Meadows

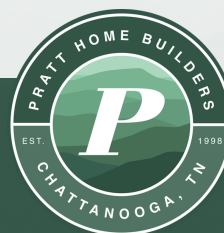
Features

- Spacious 2-Car Garage
- Covered Patio
- Open Concept Kitchen & Great Room
- Butler Pantry



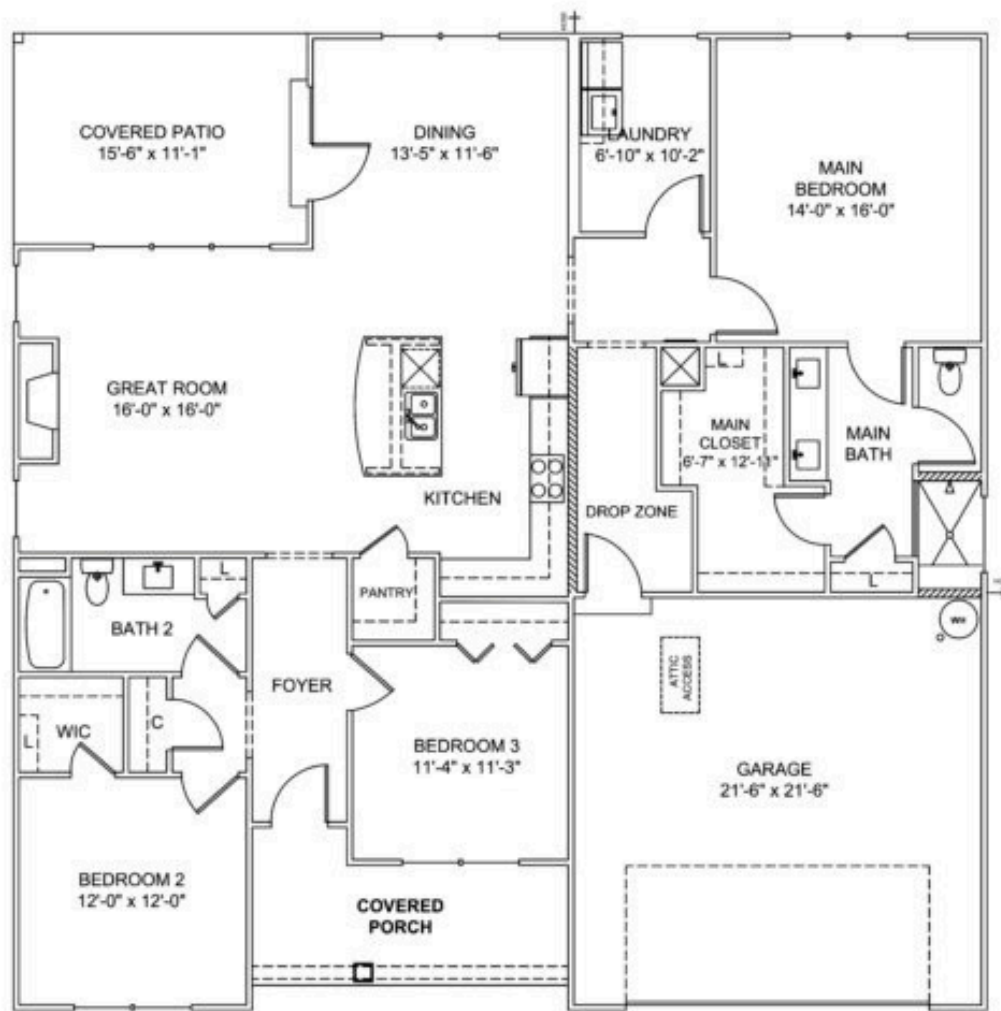
Contact a New Home Specialist

Call Brittany Shaw at (423) 757-7687



PrattLiving.com

The Silverton Floor Plan



The **Silverton** floor plan is ideal for growing families or those looking to downsize, offering 3 bedrooms and 2 full bathrooms. The great room and eat-in kitchen form a spacious and open-concept area, perfect for hosting gatherings.

This home is fitted with luxurious granite countertops and upscale vinyl plank flooring throughout most of the living space, complemented by plush bedroom carpets and sleek bathroom and laundry room tiles. A tiled walk-in shower is also included. The covered patio invites you to sit back and relax with a glass of sweet tea or your newest book.

