



The Peachtree

Homesite 55

Quick Look

\$425,000

Beds 4

Baths 3

Stories 2

SqFt 2,486



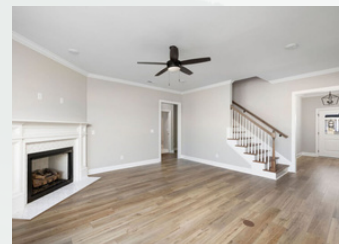
learn more
about this
home

Community

The Fields at Huntley Meadows

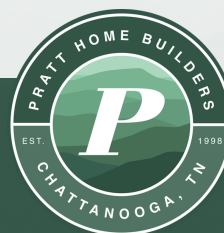
Features

- Open Kitchen & Great Room
- Formal Dining Room
- Main-Level Guest Suite
- Upstairs Laundry & Bonus Room
- 2-Car Garage



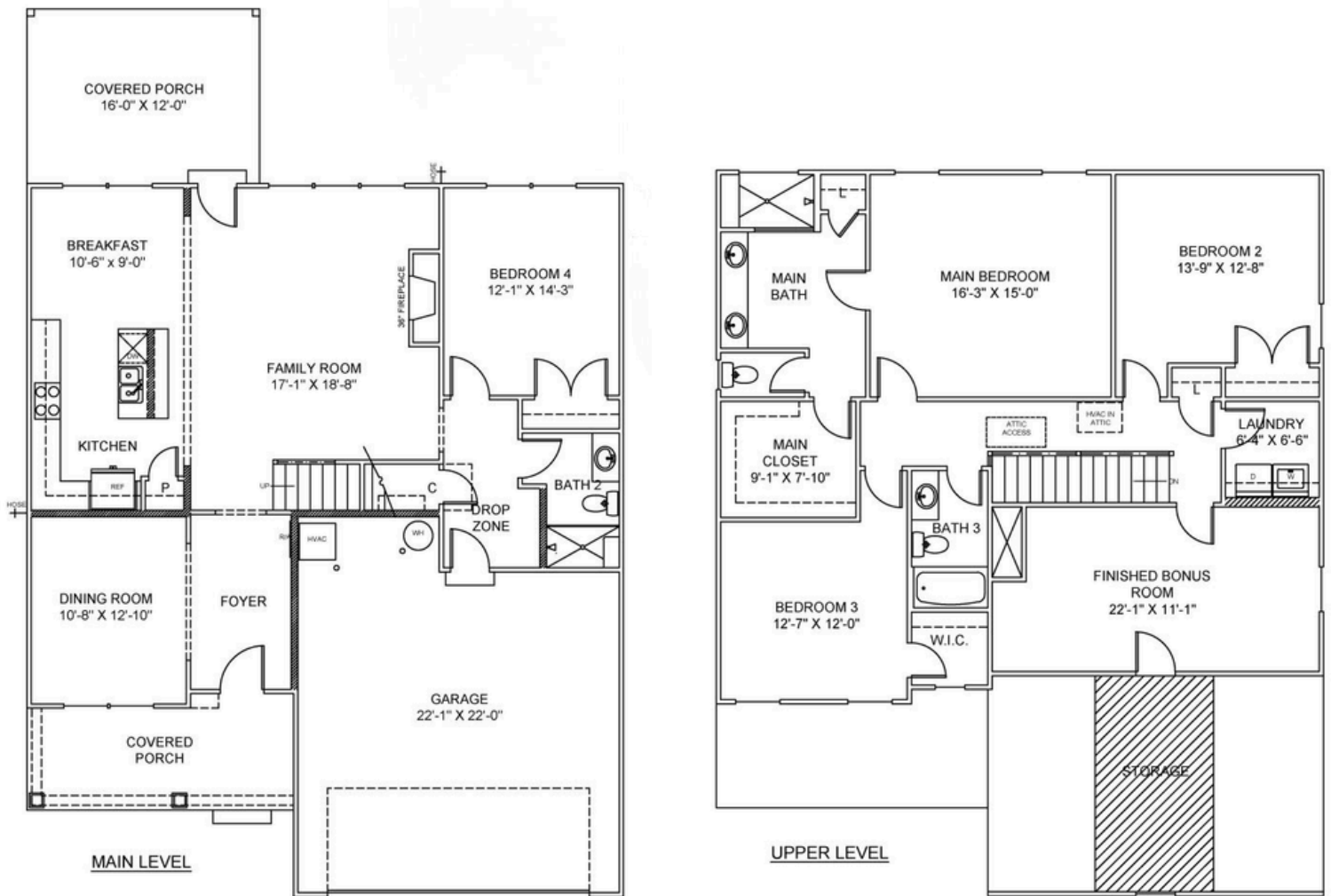
Contact a New Home Specialist

Call Brittany Shaw at (423) 757-7687



PrattLiving.com

The Peachtree Floor Plan



Easily a customer favorite! A home that supports your pursuit of a "life well-loved". While the standard plan has 4 bedrooms and 3 baths, **the Peachtree** is oh so versatile with dozens of possibilities for personalizing your space.

The downstairs bedroom is private and easily accessible by guests or older family members – they can be close to the bustle of the great room or retreat to their own space for a bit of tranquility.

The open great room area can be set up as a hub for family time or convert the over-sized bonus room to the family room and fashion downstairs as a more formal sitting room. Imagine watching movies on a big screen with the whole gang plus their friends.

Many homeowners have said what they love about the Peachtree is that every kid or hobby has a room of their own – with plenty of space to grow.

