



The Iris

Homesite 108

Quick Look

\$375,000

Beds 2

Baths 2

Stories 1

SqFt 1,543



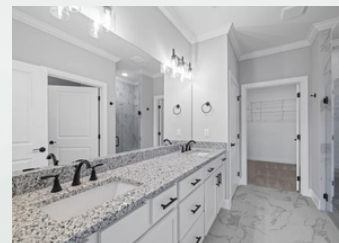
learn more
about this
home

Community

Engel Park

Features

- Spacious 2-Car Garage
- Covered Patio
- Laundry Room
- Walk-In Closet



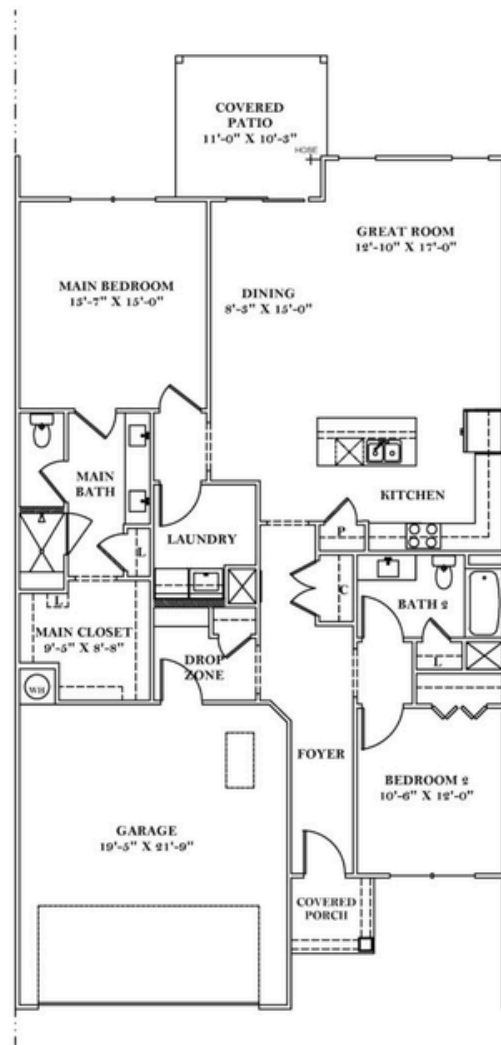
Contact a New Home Specialist

Call Brittany Shaw at (423) 757-7687



PrattLiving.com

The Iris Floor Plan



The Iris home plan, features 2 spacious bedrooms and 2 full bathrooms to match. Walking through the front door, you'll find the guest bedroom at the front of the house with a full bath directly across the hall. Wide doorways make for easy wheel-chair access throughout the home, a very unique design feature you don't see often. Moving through the hall, you're greeted by the spacious, open-concept kitchen and great room with sliding glass doors that open up to your private patio oasis.

Just a short walk from the kitchen, your laundry room is just outside of the master bedroom. In the bedroom, you'll find the large en-suite with double-vanities, a roll-in shower, plus a spacious walk-in closet.

