



The Peyton

Homesite 202

Quick Look

\$715,000

Beds 4

Baths 3.5

Stories 2

SqFt 2,860

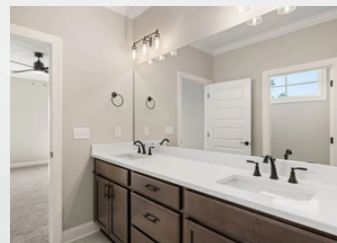
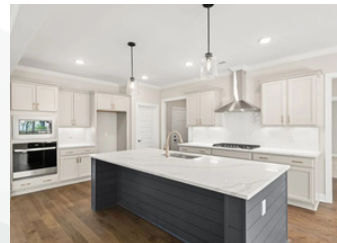


learn more
about this
home

Community Magnolia Farms

Features

- 3-Car Spacious Garage
- Covered Patio
- Open-Concept Living
- Office & Storage Space



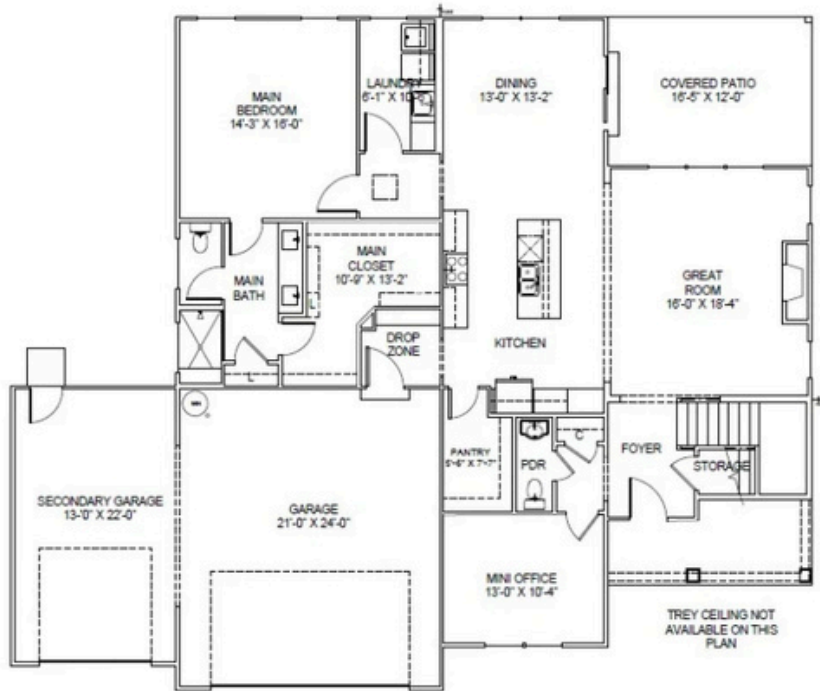
Contact a New Home Specialist

Call Brittany Shaw at (423) 757-7687

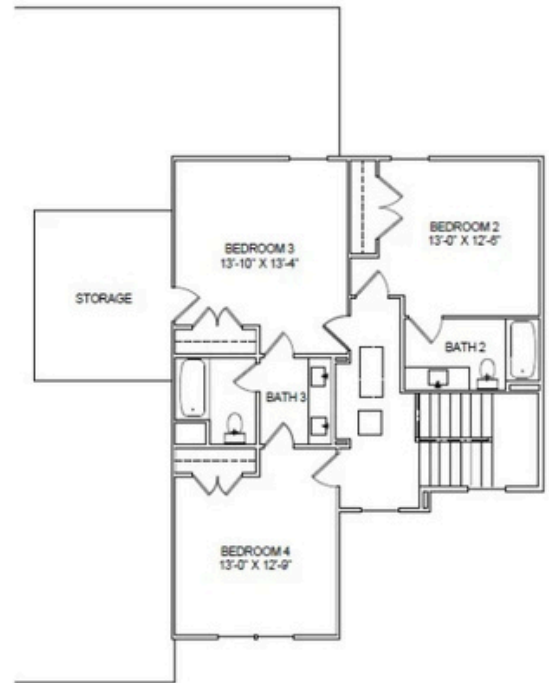


PrattLiving.com

The Peyton Floor Plan



MAIN LEVEL



UPPER LEVEL

The Peyton provides two-story living with a spacious layout designed for both comfort and gatherings. The main level opens from a foyer into a great room that flows into the kitchen and dining nook, highlighted by a large island, granite countertops, and convenient access to a covered patio. A study and powder room just off the foyer deliver practical flexibility.

The primary suite on the main floor features a generous walk-in closet and en-suite bath located near the laundry area. Upstairs, two additional bedrooms share a full bath and are joined by a bonus room—an ideal spot for media, fitness, or multi-functional use. With premium finishes, a two-car garage, and thoughtful layout, the Peyton blends practical comfort with refined details for everyday living.

