



## The Laurel

Homesite 30

### Quick Look

**\$500,000**

Beds 3

Baths 3

Stories 2

SqFt 2,596



learn more  
about this  
home

### Community

Bainbridge

### Features

- Main Bedroom Downstairs
- Walk-In Closet
- Covered Patio
- Spacious 2-Car Garage



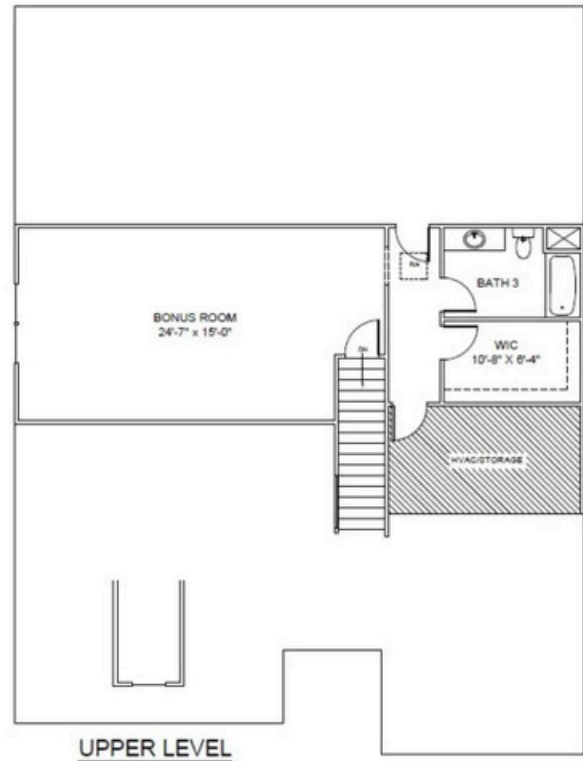
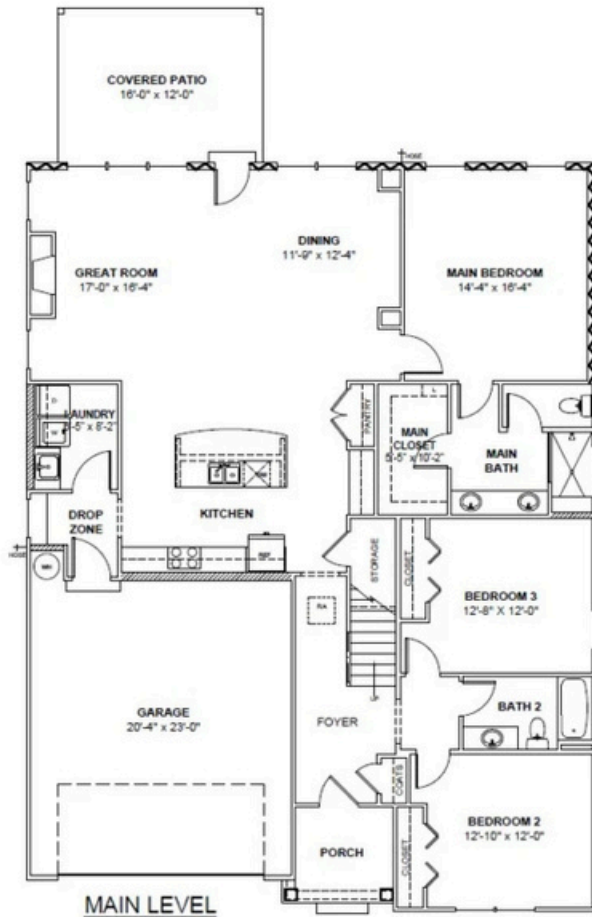
Contact a New Home Specialist

Call Brittany Shaw at (423) 757-7687



PrattLiving.com

# The Laurel Floor Plan



**The Laurel** is one of Pratt Home Builders' most flexible and functional home designs—blending open-concept spaces, everyday convenience, and upstairs versatility to meet your family's needs now and into the future.

Step through the charming front porch into a welcoming foyer that flows effortlessly into the great room, dining area, and kitchen. The heart of the home is anchored by a large center island and features plentiful cabinetry, modern appliances, and a dedicated pantry for smart storage and seamless entertaining.

This 3-bedroom home is built for main-level living, with a private owner's suite tucked at the rear of the home featuring a dual vanity, walk-in shower, and spacious closet. Two additional bedrooms and a full bath are positioned toward the front of the home—ideal for guests, children, or a home office setup.

