



Ashleigh

Homesite 25

Quick Look

\$365,000

Beds 2

Baths 2

Stories 2

SqFt 1,383



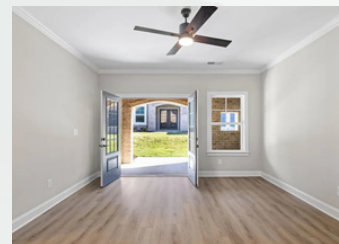
learn more about this home

Community

The Cottages at Brow Wood

Features

- 2-Car Spacious Garage
- Covered Patio
- Open-Concept Living
- Office Space



Contact a New Home Specialist

Call Brittany Shaw at (423) 757-7687



PrattLiving.com

Ashleigh Floor Plan



The **Ashleigh** Home Plan begins with a charming exterior that welcomes you into a one level design featuring two bedrooms, two bathrooms and rear covered porch.

The kitchen features elegant quartz counter-tops, white shaker panel cabinets with soft close drawers and doors, under cabinet lighting, classic subway tile backsplash and stainless steel appliances. The main bedroom features a tray ceiling and you will find a full tiled shower with bench in the main shower.

