



Ashleigh Bonus

Homesite 28

Quick Look

\$415,000

Beds 3

Baths 3

Stories 2

SqFt 2,106



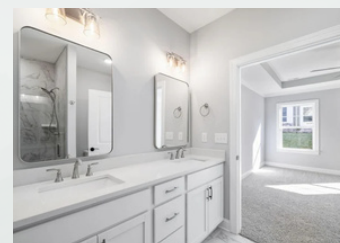
learn more
about this
home

Community

The Cottage At Brow Wood

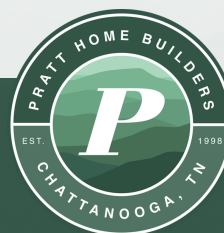
Features

- 3-Car Spacious Garage
- Covered Porch
- Sunroom
- Storage Space



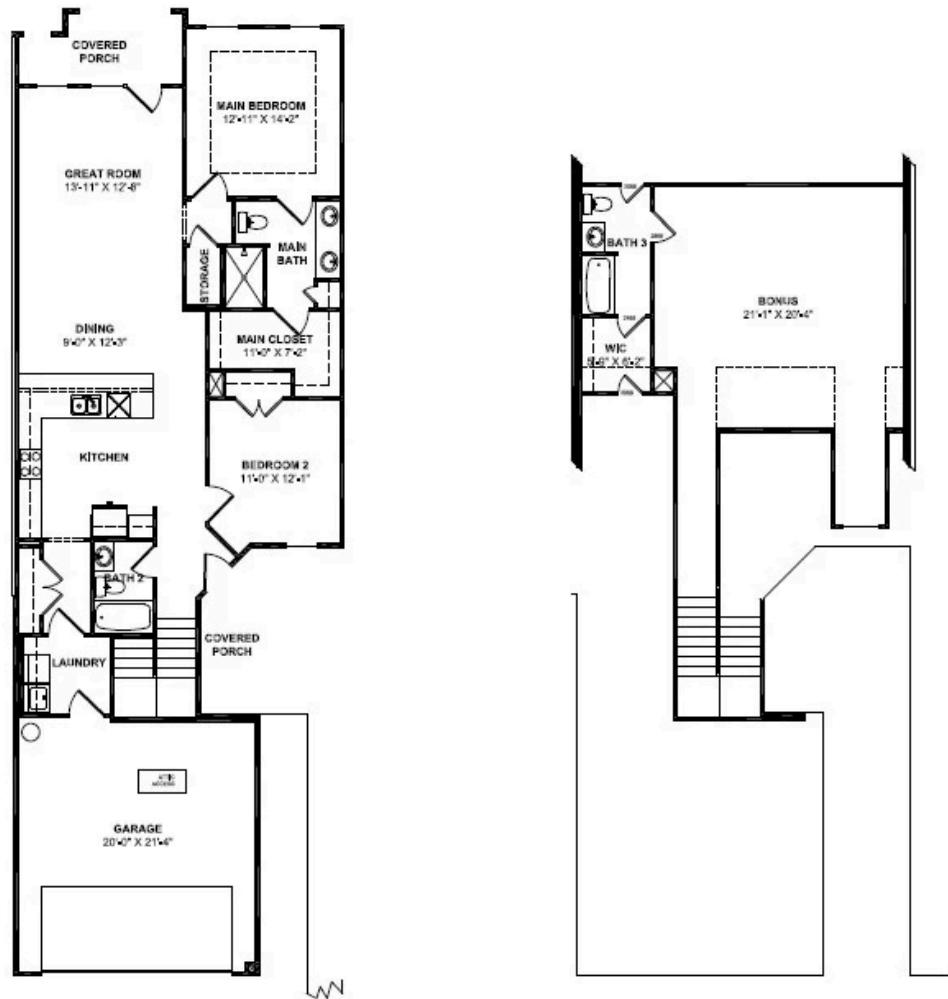
Contact a New Home Specialist

Call Brittany Shaw at (423) 757-7687



PrattLiving.com

Ashleigh Bonus Floor Plan



The **Ashleigh Bonus** offers 3 bedrooms, 3 baths, and a versatile bonus room ideal for a home office or private guest suite. Designed as a tranquil retreat, every detail was included in this home: open living spaces, a covered rear porch, and an elegant owner's suite with tray ceiling and a tiled shower with bench.

The kitchen showcases elevated finishes including granite countertops, upgraded plumbing & lighting fixtures, timeless white shaker cabinets and beautiful tile backsplash.

Located in the Cottages at Brow Wood, this new home on Lookout Mountain delivers a peaceful, low-maintenance lifestyle in a prime location. This thoughtfully planned community offers a strong sense of connection, refined design, and easy access to golf, dining, and scenic outdoor living.

