



The Piedmont

Homesite 07

Quick Look

\$404,900

Beds 3

Baths 2

Stories 1

SqFt 1,711



learn more
about this
home

Community

Nestledown

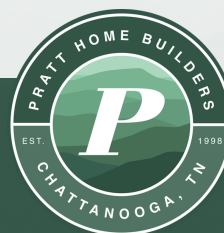
Features

- 2-Car Spacious Garage
- Covered Porch
- Open Concept
- Walk-In Pantry



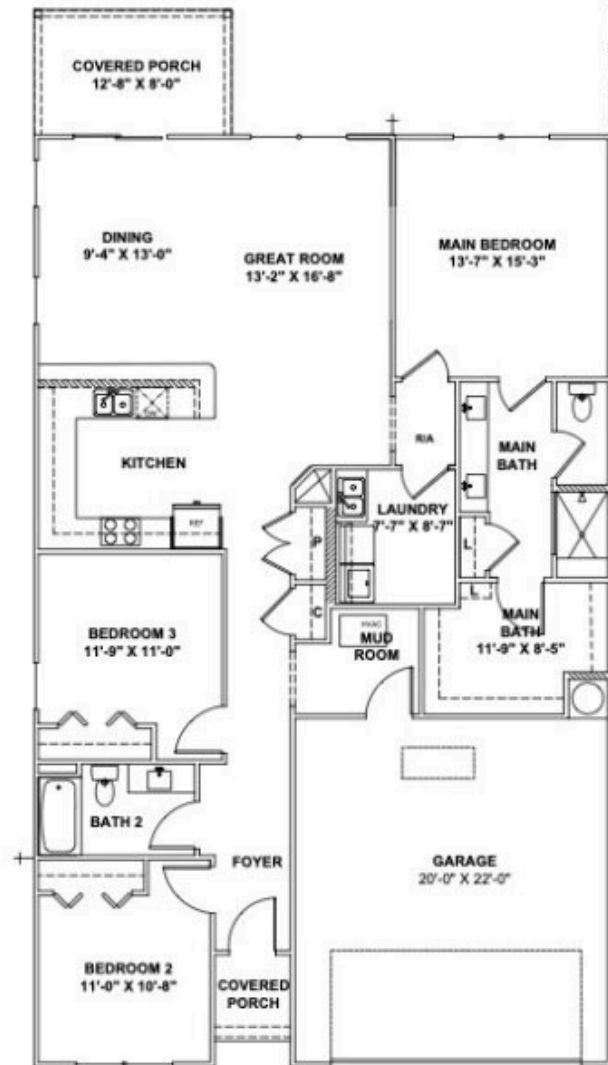
Contact a New Home Specialist

Call Brittany Shaw at (423) 757-7687



PrattLiving.com

The Piedmont Floor Plan



Introducing **The Piedmont** home design featuring just over 1,700 square feet of living space. This signature single-level living plan includes 3 bedrooms and 2 bathrooms, with ample space for family or guests. Entertain in style with a gourmet kitchen that features granite countertops, a spacious island, walk-in pantry, tile backsplash, under cabinet lighting, and top-of-the-line stainless steel appliances.

Step from the open great room to a cozy covered patio to enjoy the breeze. The master bathroom features an indulgent oversized shower with a full tile bench, perfect for relaxation.



© Pratt home builders. all rights reserved. reproduction of the illustrations or working drawings by any means is strictly prohibited. all enclosed elements are representational; actual homes and floor plans may vary.